

KEEP

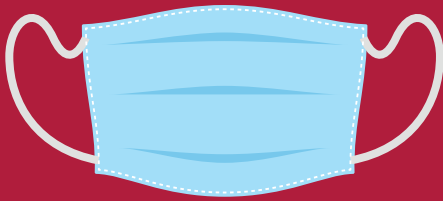
HARVARD

HEALTHY

Shared Restroom Use During Isolation

Remain masked except for showering, facial grooming, or oral hygiene

(If possible, time unmasking activities to when restroom is unoccupied)

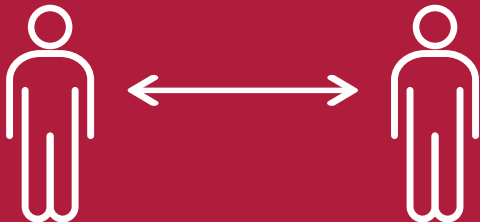


Use disinfectant to wipe down high-touch surfaces (e.g. faucets) before and after use

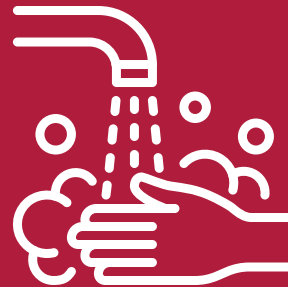
(Follow manufacturer's instructions for use)



Maintain distance between others to the extent practical (e.g. alternate stalls/sinks)



Wash hands for 20 seconds with soap & water after using restroom



This restroom is cleaned and disinfected daily by custodial staff.

Please do not enter restroom when it is closed for custodial cleaning and disinfection.

If disinfectant supplies need to be replaced, please notify the building manager.