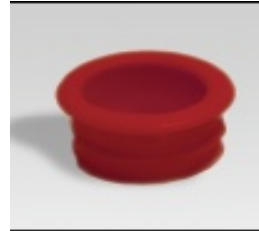




## Sharps Reusable Container Use & Removal Procedures for HMS Longwood



Securement cap - to be used during transportation  
(for small 2-gallon container only)

### ALWAYS:

- point the sharp end down when placing sharps in the small (2-gallon) sharps containers with the round (direct drop) opening.
- insert the red securement cap (see above) before removing the small (2-gallon) sharps container from its base in order to prevent accidental spillage during transportation.
- close the self-locking trap door on the larger (8-gallon) containers prior to transportation.

### DON'T:

- recap, shear or break needles, or remove needles from syringes.
- overfill a sharps container past the FILL LINE marked approximately 3/4s from the bottom of the container.
- place items on top of the sharps container.
- place reusable sharps containers in biowaste containers.
- autoclave these reusable containers (non-thermoplastic).



### NOTE:

- Sharps contaminated with both biological and radiological material should not be put in reusable sharps containers: radiological sharps should be packaged in **disposable** sharps containers for pickup by radiation technicians.

### CUSTOMER SERVICE:

Contact [HarvardMedSharps@triumvirate.com](mailto:HarvardMedSharps@triumvirate.com) if you need additional empty reusable sharps containers (for an existing or new location) or need filled containers to be picked up in the immediate future. Triumvirate technicians check for filled containers in labs or pre-arranged common areas (e.g., cold rooms) weekly.